

***We want your feedback!***

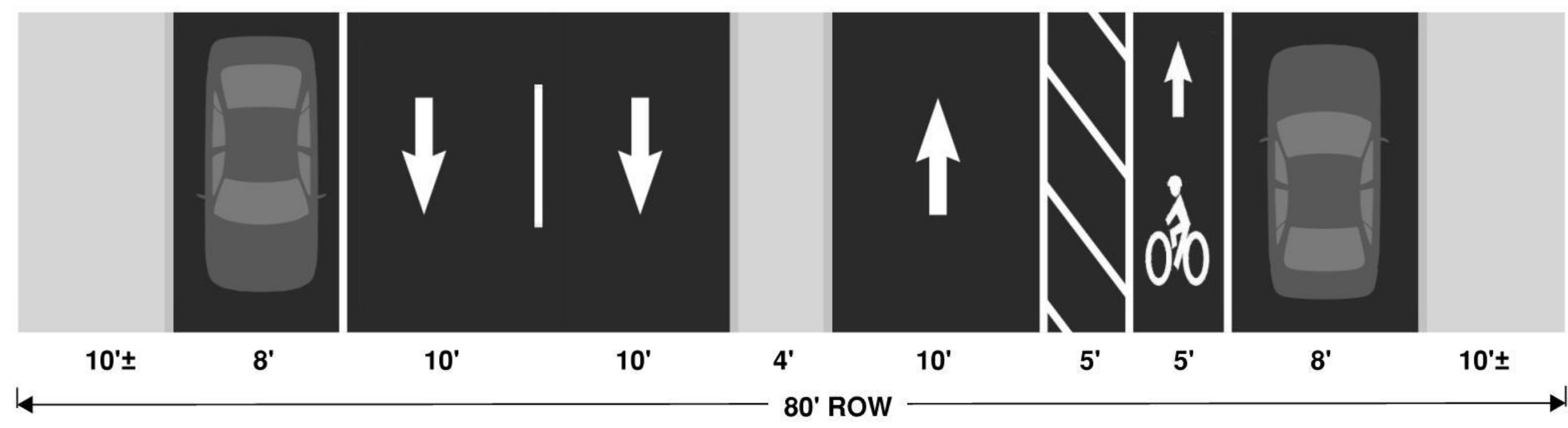


**Please use the Post-it Notes to write down any concerns you have along the corridor. Place the note adjacent to the area of concern.**

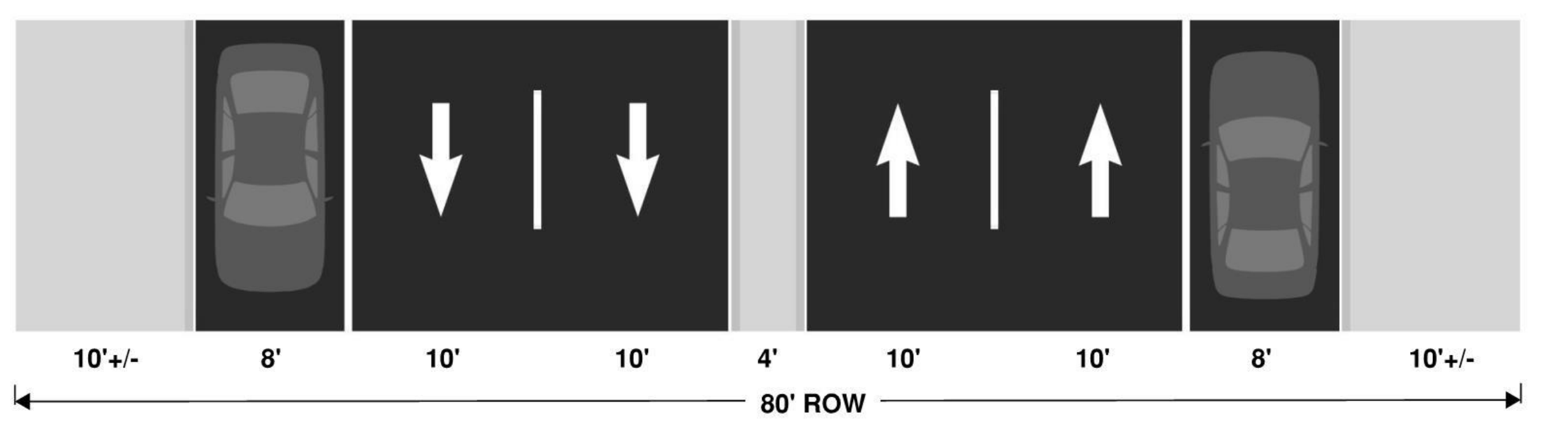




**What is a Road Diet?**  
 A Road Diet consists of reducing the size of pavement area and utilizing it for multi-model accommodations and green space.



Existing Conditions – River to Fairway



Existing Conditions – Fairway to Harvard

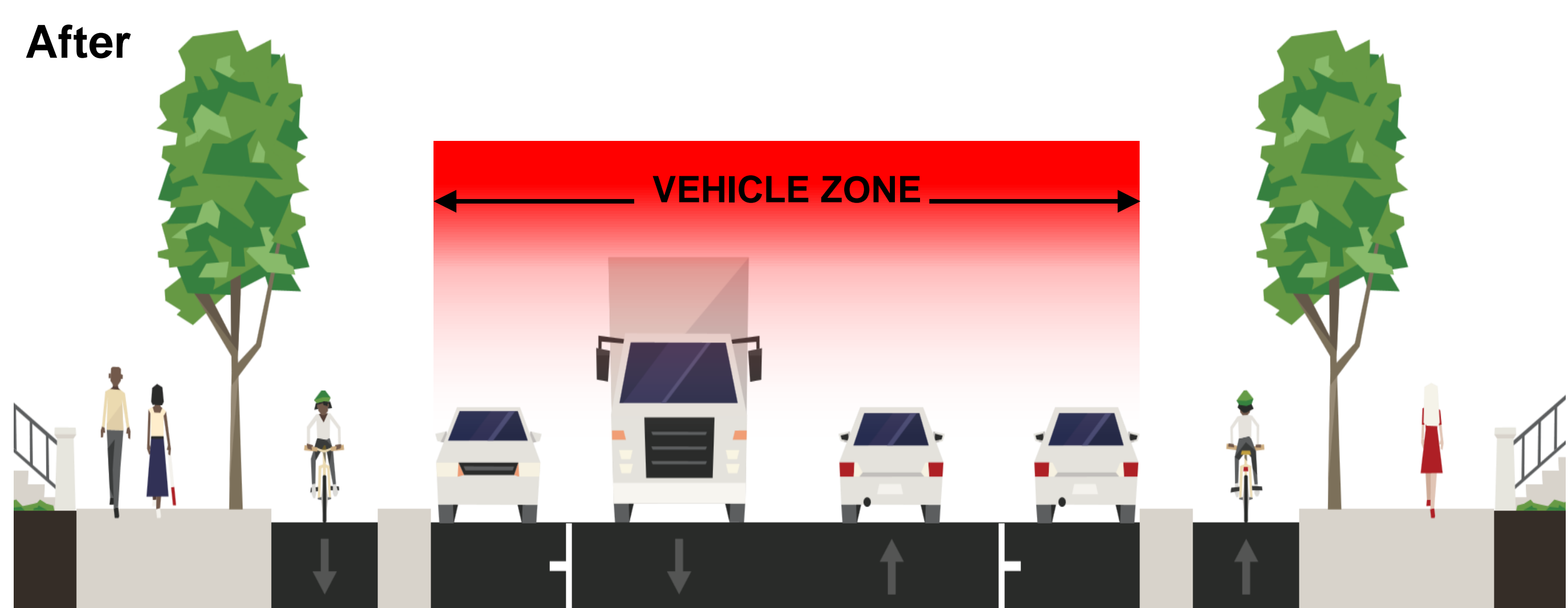
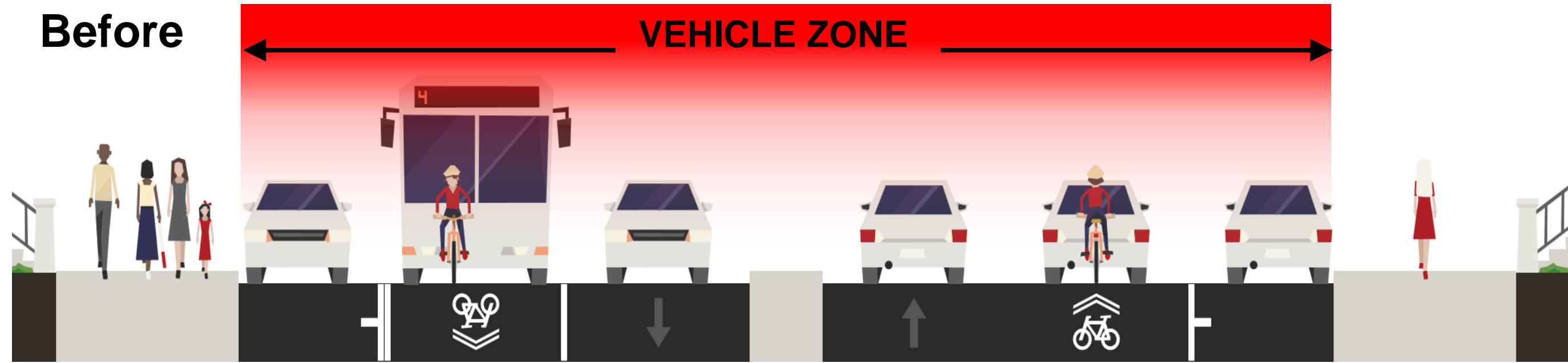
## Term Definitions

**Curb Extensions** – Shorter pedestrian crossing and increased pedestrian visibility.

**Raised Crosswalks** – Visually emphasizes crosswalks, slows vehicles.

**Land Delineation** – Narrowed travel lanes to encourage slower speeds, clear space allocation for bikes and vehicles.

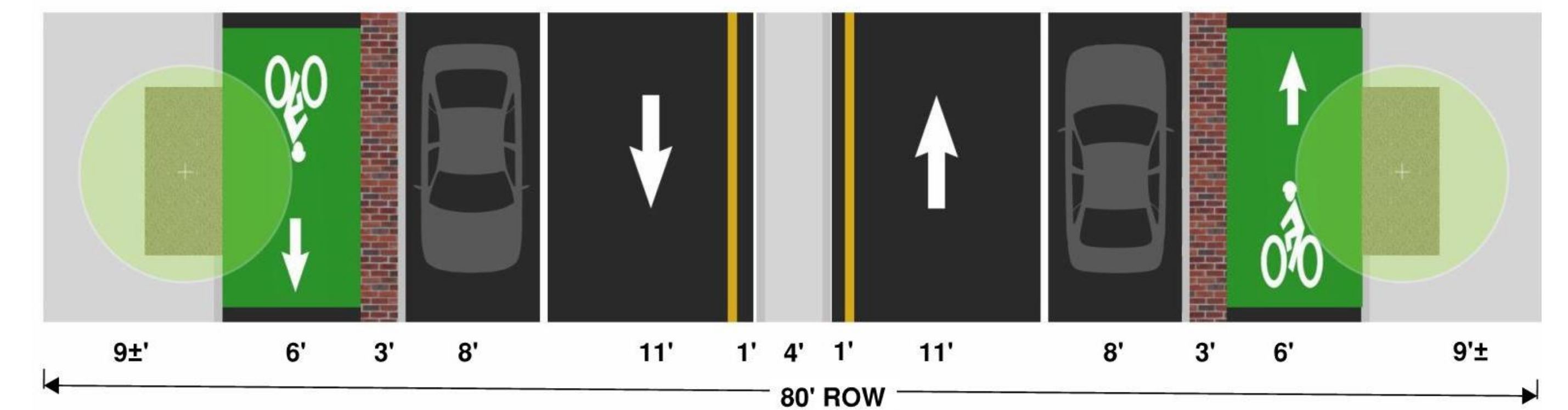
**Signage** – Alerts drivers to expect pedestrians, bicycles, school children.



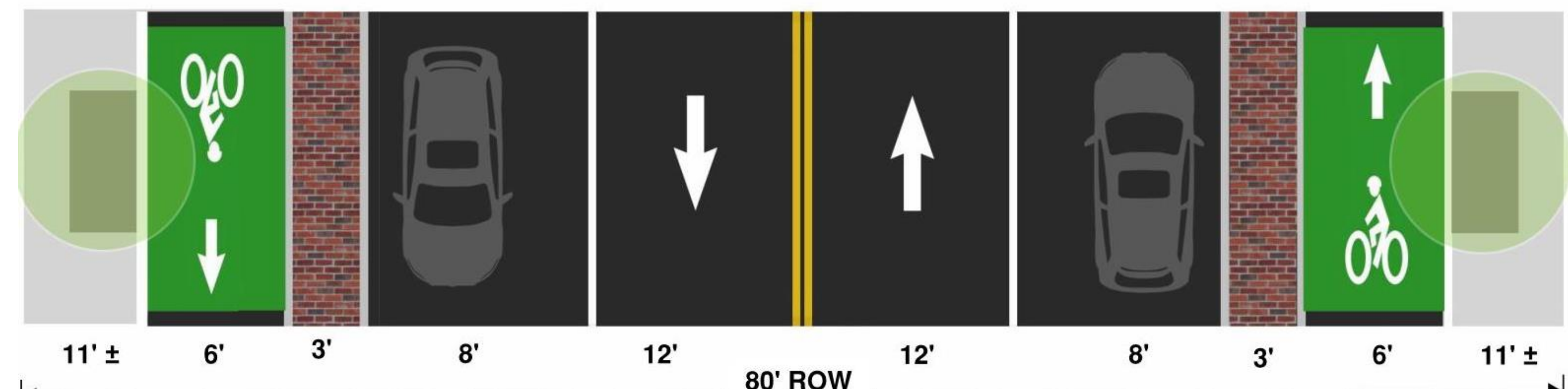
Hemenway St at Forsyth Way (Boston)



Curb Extension and Bike Lane (Massachusetts Ave.)



Road Diet Concept 1 (Maintain Median)



Road Diet Concept 2 (Remove Median)



### Term Definitions

**Tighter Curb Radii** – Slower turns for vehicles around corner and better sight distance.

**Accessibility** - ADA compliance, wider sidewalks, safe sidewalk cross-slopes, smooth surface, wheelchair accessible curb ramps.

**Marked Bike Crossings (Green)** – Raises awareness of bicycles in conflict areas, guides bicyclists through intersections, makes bicycle movements more predictable.

**Protected / Buffered Bike Lanes** – Provides separation between bicyclists and vehicle traffic. Separation may be a striped buffer, parked cars, delineators, or raised to sidewalk level.

**Signal Timing for Pedestrians** – Provides safety, comfort, and convenience for all users at signalized intersections. Allows multiple modes of transportation to safely move through the intersection with limited conflicts, low delay, and more comfort.

**Sharrows** – In mixed flow lanes, sharrows visually alert drivers that bicyclists will ride in traffic.



Pedestrian Crossing (Boston)



Marked Bike Crossing (Massachusetts Ave.)



Curb Ramp (Boston)



Pedestrian Push Button



Vassar Street (Cambridge, MA)



Sharrow (Museum Road) [calmstreetsboston.blogspot.com](http://calmstreetsboston.blogspot.com)

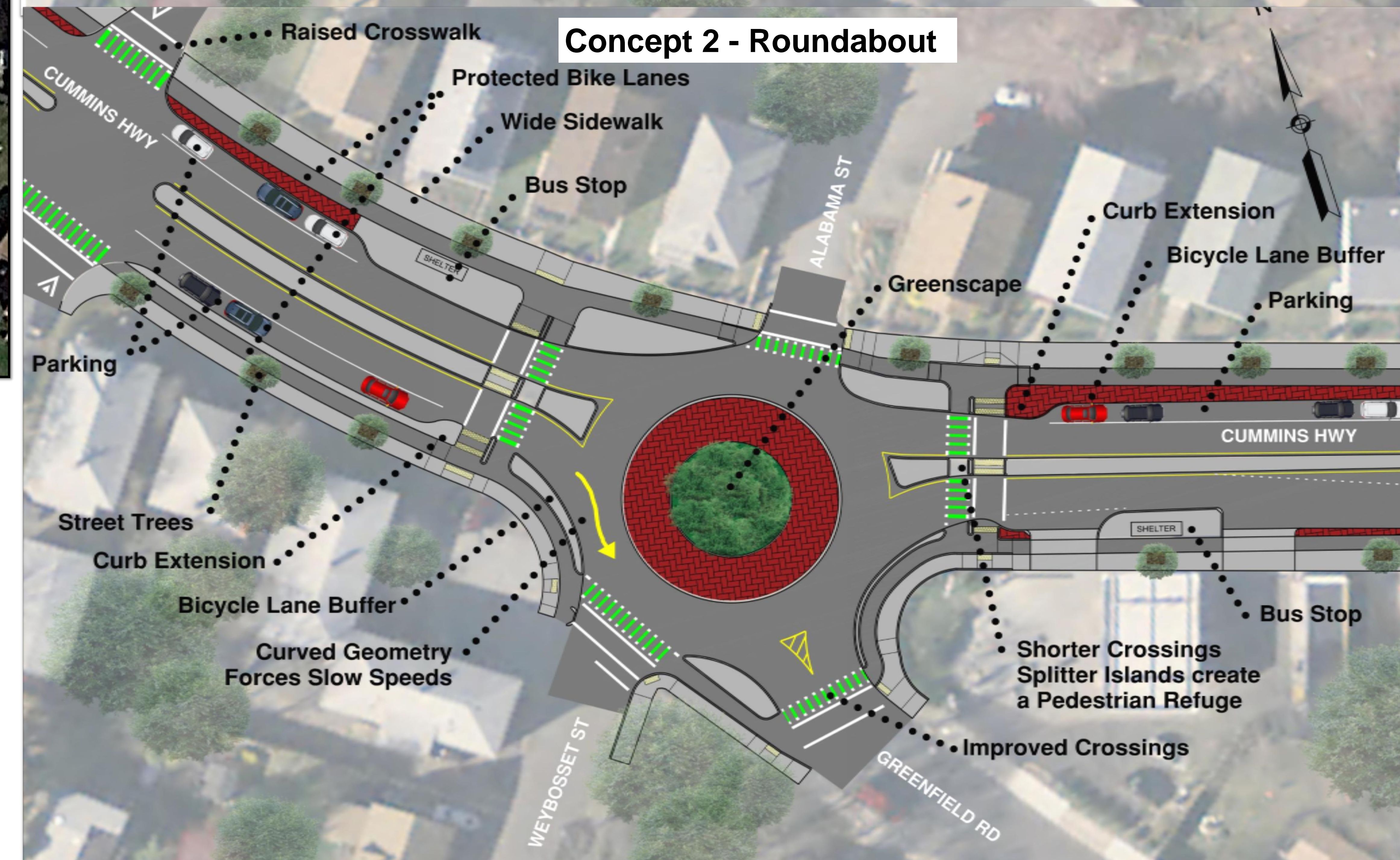
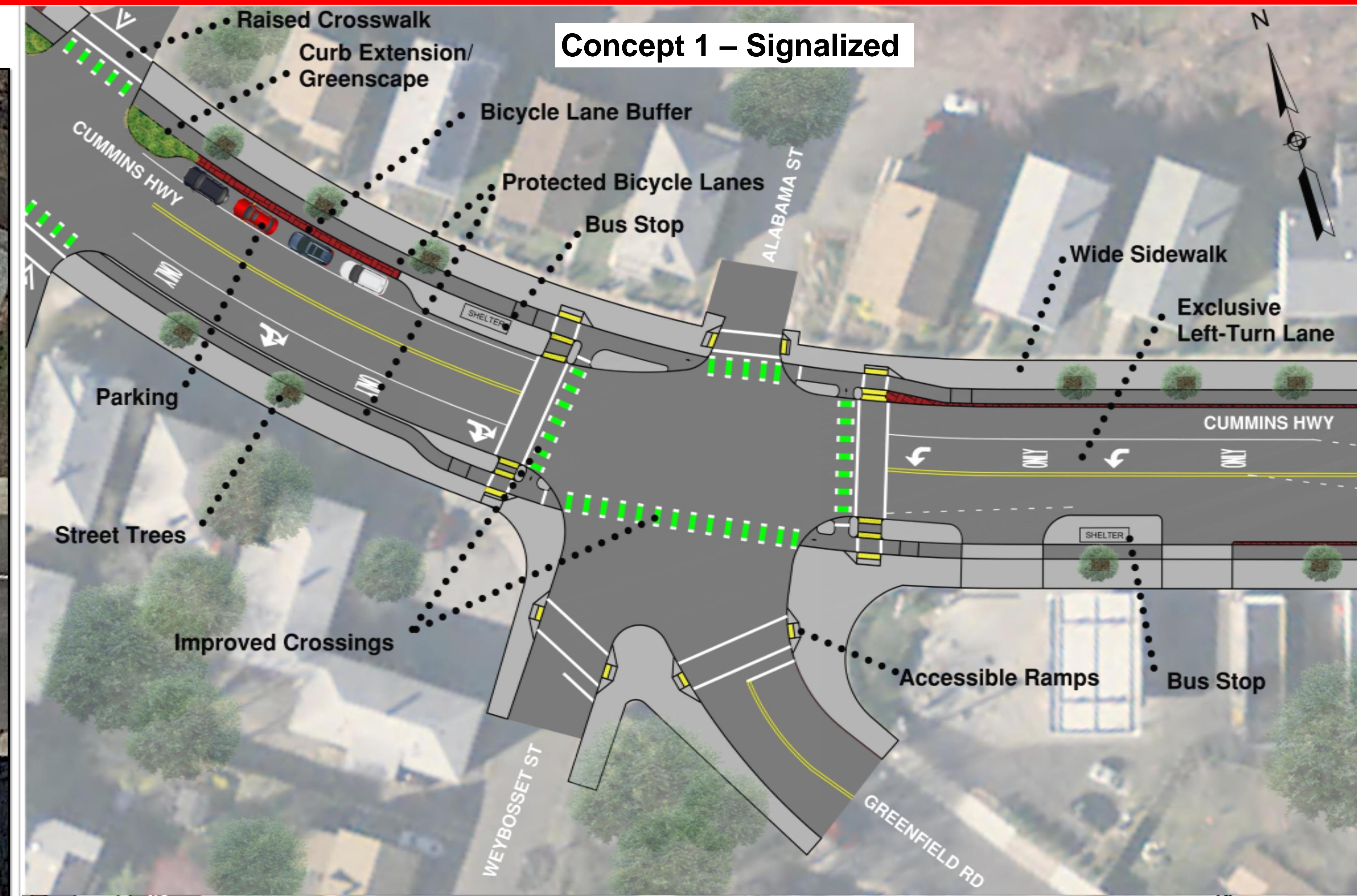
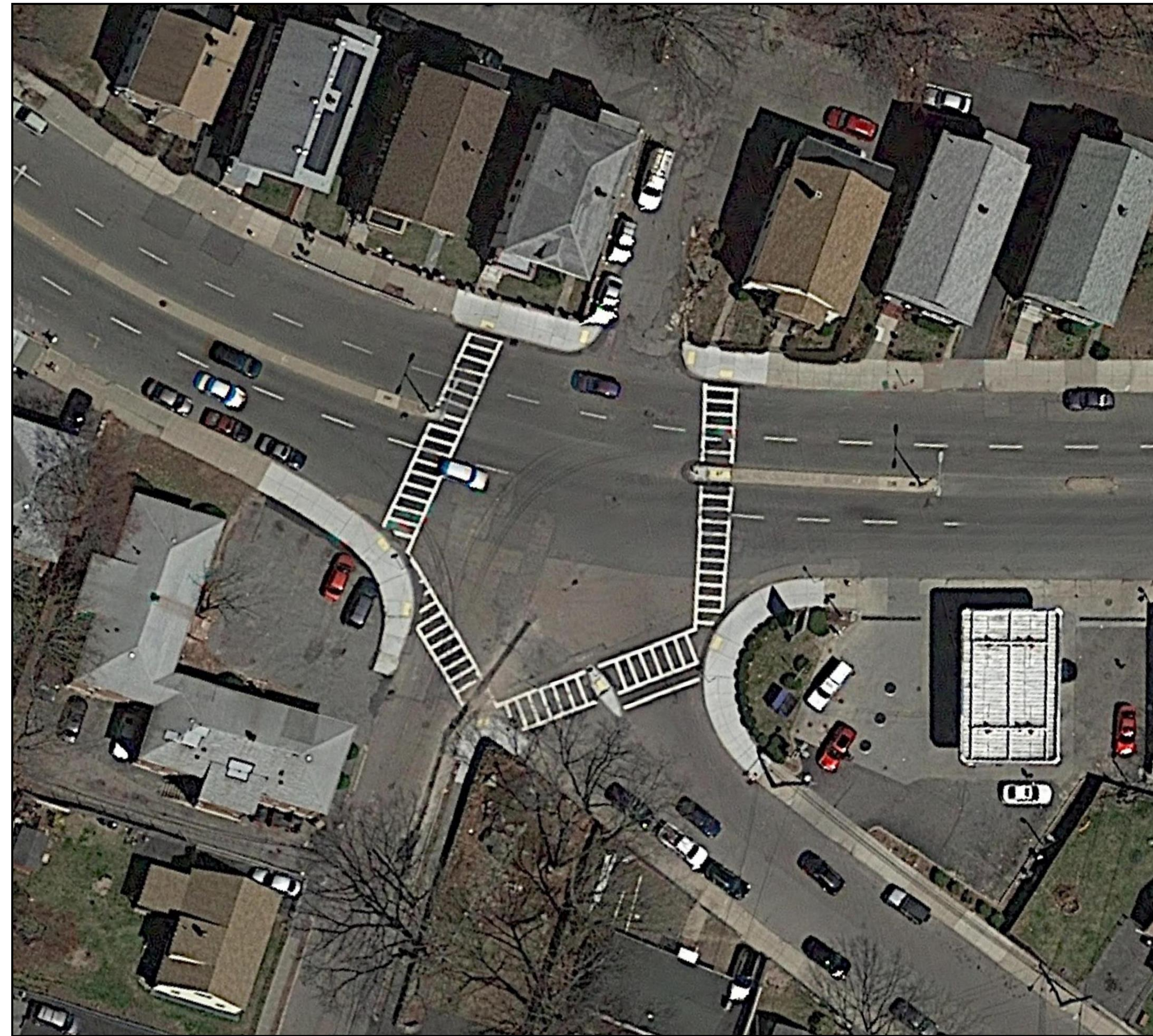




# SAFETY AT CUMMINS AND GREENFIELD INTERSECTION

## STATION NO. 3

Existing Conditions



### CUMMINS HIGHWAY PROJECT

PUBLIC MEETING  
APRIL 11, 2019

City Of Boston  
Martin J. Walsh, Mayor

