
GREEN INFRASTRUCTURE

& the reconstruction of Cummins Highway

October 20, 2021



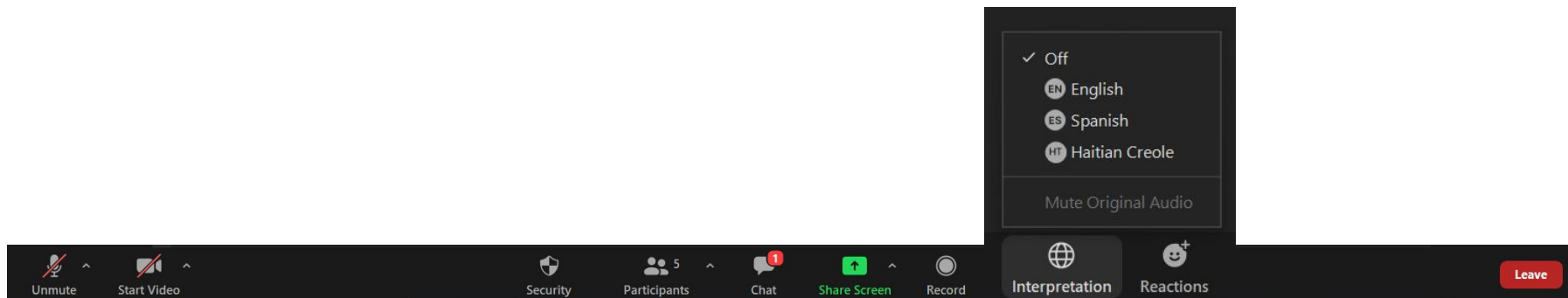
Public Works



Transportation

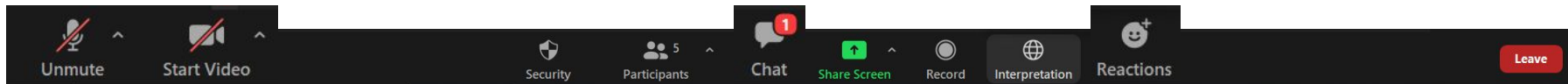
Welcome! ¡Bienvenidos! Akeyi!

- Si hablas español y prefieres escuchar la reunión en esta lengua utiliza el botón de “Interpretation” (Interpretación) para acceder al canal de audio en español.
- *Si w pale Kreyòl Ayisyen e w prefere tande reyinyon an nan lang sa a tanpri sèvi ak bouton "Interpretation" (Entèpretation) pou w jwenn aksè ak chèn odyo pou Kreyòl Ayisyen an.*



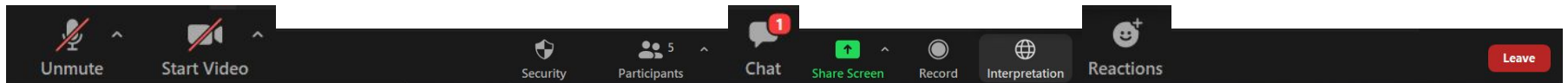
Welcome! ¡Bienvenidos! Akeyi!

- This meeting **will be recorded**.
 - Esta reunión **será grabada**.
 - *Reyinyon sa a **ap anrejistre**.*
- Update your name in Zoom to include your preferred name and your pronouns.
 - Actualiza tu nombre en Zoom con tu nombre preferido y tus pronombres.
 - *Aktyalize non w sou Zoom pou w mete non prefere w ak pwonon w.*

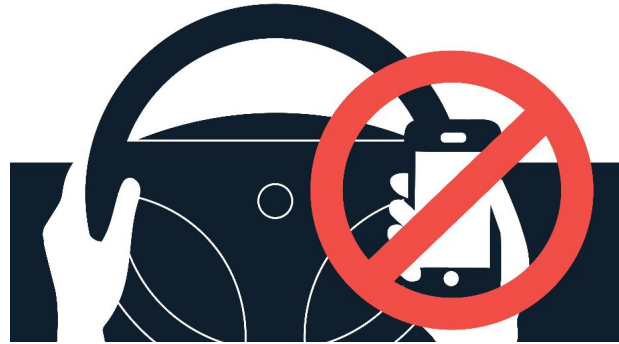


Welcome! ¡Bienvenidos! Akeyi!

- Your microphones are turned off to start. You will need to unmute to speak. Joining via phone? Press ***6** to unmute.
 - Tu micrófono está apagado al empezar. Tendrás que reactivarlo para hablar. ¿Participando por teléfono? Presiona ***6** para reactivar el micrófono.
 - *Mikwo w fèmen pou kòmanse. Ou pral bezwen ouvri mikwo a pou w pale. W ap konekte pa telefòn? Peze ***6** pou ouvri mikwo a.*
- You can use non-verbal feedback options. Raise your hand or leave a message in the chat box if you have a question. If you called into the meeting, use ***9** to raise your hand.
 - Puedes utilizar las opciones de reacción no verbales. O dejar un mensaje en el chat si tienes alguna pregunta. Si estás llamando por teléfono usa ***9** para levantar la mano.
 - *Ou gendwa sèvi ak opsyon fidbak non-vèbal. Leve men w oswa kite yon mesaj nan bwat tchat la si w genyen yon kesyon. Si w konekte nan reyinyon an, sèvi ak ***9** pou leve men w.*



DON'T LOOK AT YOUR
SCREEN WHILE DRIVING



Hello! ¡Hola! *Bonjour!*



Jeffrey Alexis

Engineering,
Public Works
Department



Dave Queeley

Eco-Innovation Director,
Codman Square
Neighborhood
Development
Corporation



Hannah Fong

Active Transportation,
Transportation
Department



**Daniela Sánchez
Zamora**

Active Transportation,
Transportation
Department

Meeting Goals

Learn from Codman Square Neighborhood Development about their work leading urban environmental activism

- *Climate change is upon us!* What work needs to be done?
- Initiatives and ideas for putting people who will be most impacted first in our solutions
- Possibilities for green infrastructure on streets

Learn about the Cummins Highway reconstruction project

- Update on the Cummins Highway redesign trial and next steps
- Goals of the reconstruction and opportunities
- Recap what we've done so far and next steps

Cummins Highway Temporary Redesign

We ended the trial on Cummins Highway this week. *Until construction begins, the street will be like it was before.*

During the last year, we collected data on traffic speeds, travel times, and your experience of one lane in each direction. Visit boston.gov/cummins-highway to review the data we collected.

The data we collected will inform how we design the new Cummins Highway, but **your input is still crucial.**



Cummins Highway Reconstruction

We cannot produce a design without your input. **You will help shape how Cummins should be for the next 70 years.**

Currently, we are doing community outreach to inform the final design.



We plan to reconstruct Cummins Highway

Cummins Highway hasn't been updated since the **spring of 1955**.

The street cars that ran along Cummins were removed in 1953 to make room for more cars.

The street's layout reflects the priorities of the 1950's: enable non-residents to drive quickly through our neighborhoods.



Cummins Highway Reconstruction

During a reconstruction project we **completely rebuild** the street, including sidewalks, curbs, street lights, traffic signals, road pavement, and replace or update utilities as necessary.

The City has budgeted approximately **\$12 million** for reconstruction of Cummins Highway.



Cummins Highway Reconstruction

- **Advance Go Boston 2030 goals:**
 - Improving safety on our streets
 - Reducing emissions
 - Investing in communities to achieve equity in access to opportunities



Cummins Highway Reconstruction

- *Advance Go Boston 2030 goals*
- **Partner with other City departments to advance our collective plans:**
 - To inform residents of the work happening around the City
 - To improve collaboration in our work and achieve neighborhood and citywide goals



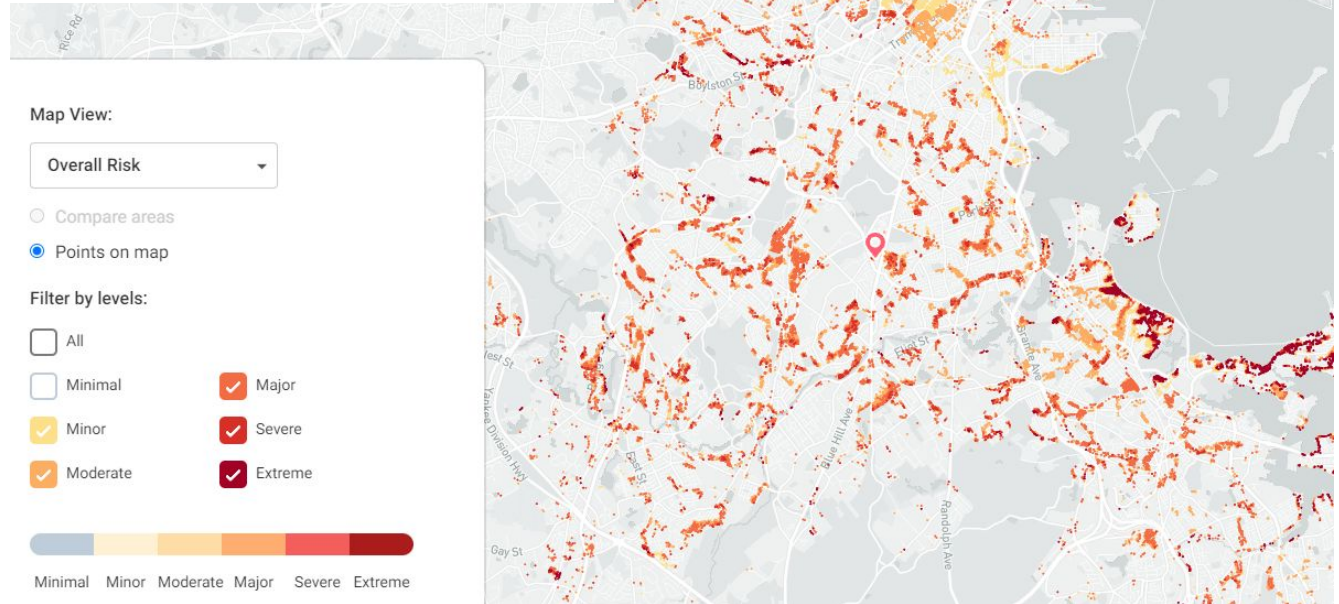
Cummins Highway Reconstruction

- *Advance Go Boston 2030 goals*
- *Partner with other City departments to advance our collective plans*
- **Collaboration with residents to advance your goals:**
 - Awareness and participation in efforts that you care about
 - Confirm your vision for the future through our projects



Why are we thinking about green infrastructure on Cummins Highway?

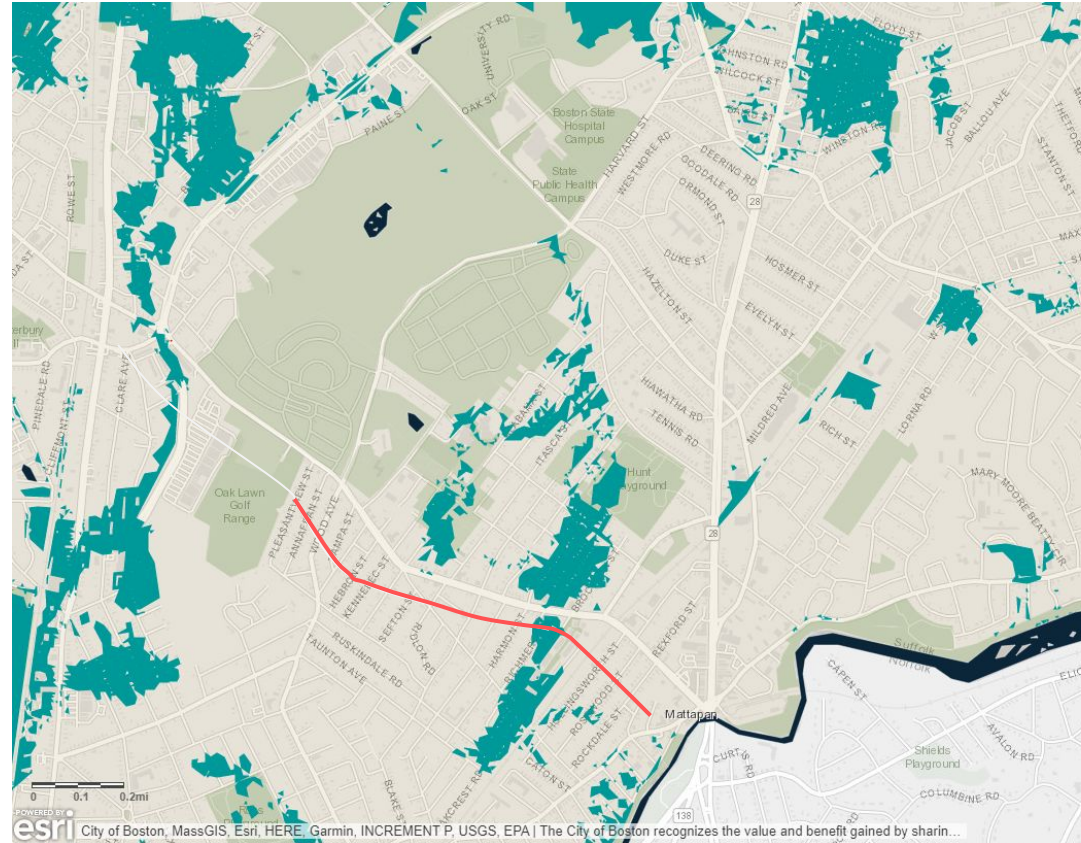
Boston has a major risk of flooding over the next 30 years, which means flooding is likely to impact day-to-day life within the city.



Why are we thinking about green infrastructure on Cummins Highway?

Green infrastructure is *more than just aesthetics*. It can help us manage the increased risks of flooding and heat island effects from climate change.


We want to design Cummins Highway to be more resilient to climate change.



Green Infrastructure Opportunities Along Cummins Highway and Beyond:

*Building Equitable, Healthy & Climate Resilient Neighborhoods
in Boston*



The background features abstract, overlapping geometric shapes in various shades of green, ranging from light lime to dark forest green. These shapes are primarily located on the right side of the slide, creating a modern, layered effect. The text is positioned on the left side of the slide, set against a plain white background.

“Cities have the capability of providing something for everybody, only because, and only when, they are created by everybody.”

— Jane Jacobs, [The Death and Life of Great American Cities](#)

Fairmount Indigo CDC Collaborative

- ▶ FICC consists of CSNDC, DBEDC, SWBCDC focusing on the Fairmount Line from Hyde Park through Dorchester to Downtown Boston
- ▶ Focus on Transit Equity, Affordable Housing, Economic Development
- ▶ Currently partnering on a Kresge Climate, Change Health and Equity Grant
 - ❖ Focus on resident advocacy, empowerment and engagement
 - ❖ Advocate for passage of Climate Roadmap, HERO legislation, and Boston Conservation Corps

KCSA Survey Results

- ▶ 64% lived in neighborhood 10+ years
- ▶ 50% renters; 50% homeowners
- ▶ 40% worry about paying bills; 50% worry about pay rent/mortgage
- ▶ 72% observed changes in Codman Square
- ▶ 70% are satisfied with changes observed
- ▶ 50% have seen a rent increase since 2011
- ▶ 18% of homeowners rejected for a refinance loan in last 5 years
- ▶ 46% want to be involved in doing something @ high housing prices

THE BUILT ENVIRONMENT AND HEALTH

Partnership with Conservation Law Foundation

- ▶ 10-year longitudinal study; access health claim data
- ▶ Impact of new amenities/built environment on current resident's health (e.g., housing, transit, etc)
- ▶ Does it help current residents?
- ▶ How do community improvements relate to resident mobility?
- ▶ Do improvements result in displacement?
- ▶ Codman Square NDC serving as community researcher/outreach

Research by Vedette Gavin, CLF

O.A.S.I.S. at Ballou

(Opportunity Affirmation Sustainability Inspiration Success)

Urban Agriculture

- ▶ 20,000 SF
- ▶ Sells organic, healthy, hyper-local food to the community
 - ▶ Helps offset local food desert
- ▶ Serves primarily local people of color
- ▶ Employs reentry citizens in growing and selling food to residents; improves interaction and engagement skills
- ▶ Reduces urban heat island effect and provides urban carbon offset
- ▶ Produced 2700 # of food in 2020





OASIS on Ballou—Hoop House

2020



Tree planting, hosted by CSNDC and TNC, in Codman Square's Oasis on Ballou urban agriculture site. Courtesy of CSNDC photo archive.

TNT Eco-Innovation District Neighborhood Scale Sustainability

▶ Focus Areas:

- ❑ Energy Efficiency
- ❑ Democratizing Solar Power
- ❑ Greening Affordable Housing
- ❑ Tree Planting







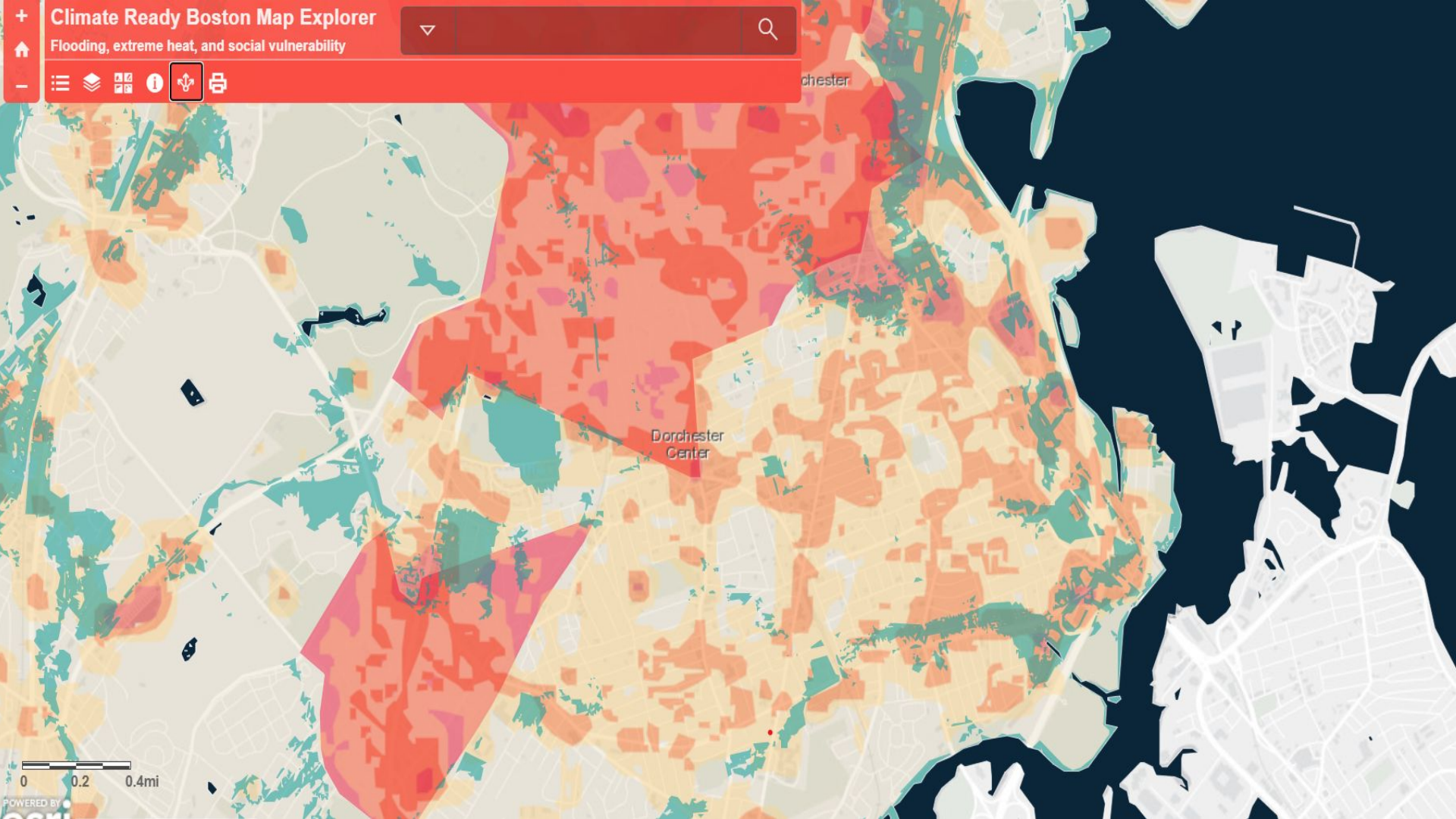


The Eco Innovation District By the Numbers...

- 46 acres, 252 homes, 13 blocks,
- 1,500+ residents, in approximately 525 families
- 30% of residents live under the poverty line (*\$23,850 for a family of four*); *33% more live just at the poverty line*
- The unemployment rate for young men of color is nearly 50%
- Only 22% college graduation rate in our service area
- 400+ children and youth under the age of 18
- 30 small businesses are located in TNT
- 80% of residents are renters, 20% homeowners
- 78% identify as African-American, 8% other race, 5% White,
- 5% are two or more races, 2% American Indian, 2% Asian
- 20% report as Hispanic/Latino ethnicity

Metrics....

- Three green roofs on bus stops as part of EPA's *Soak Up the Rain* Campaign
- 32 rain barrels installed in 2015
- 35% of homes retrofit with new insulation; new goal of 50%
- 1 passive park, 1 active park, 1 community garden, 1 urban ag site
- 200 Ornamental and fruit trees planted since 2018; included trainings by TNC
- More... trees, green roofs, rain gardens, parks, green infrastructure...

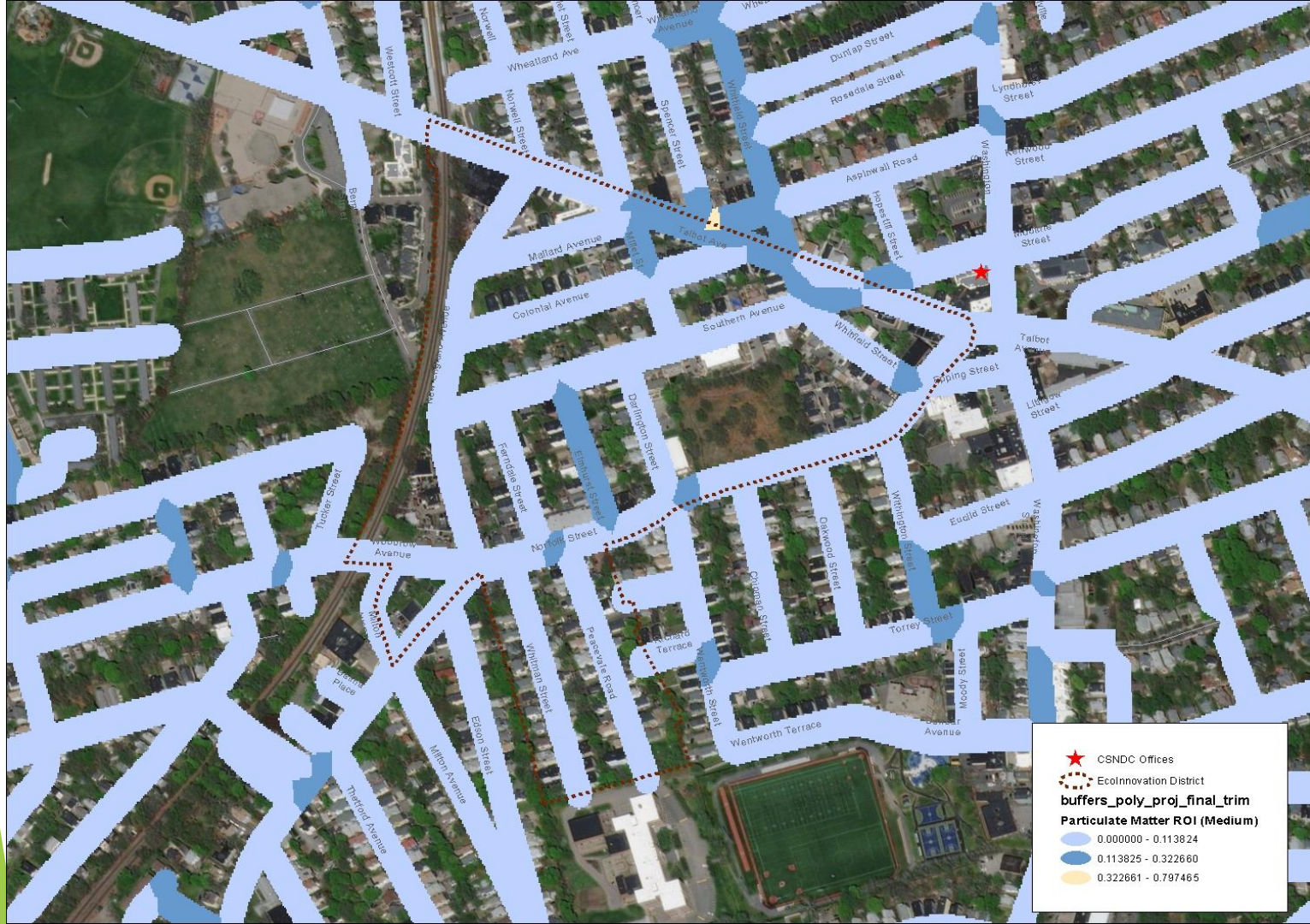


Dorchester Center



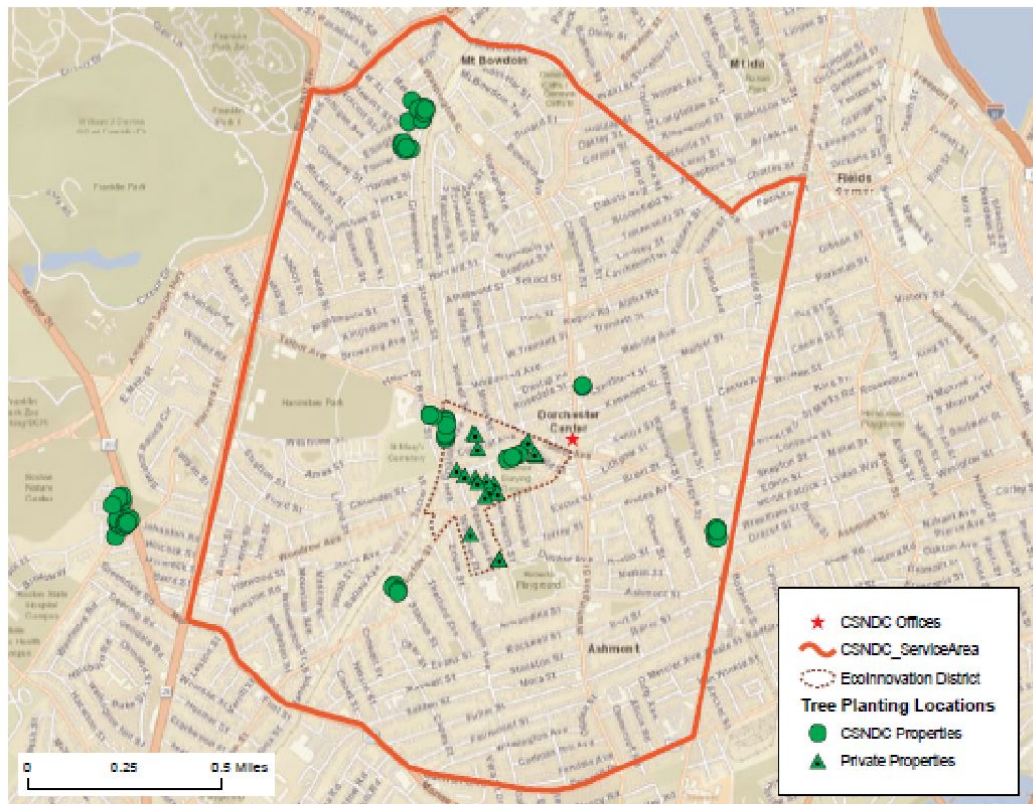


- ★ CSNDC Offices
- Ecolnnovation District



★ CSND Offices
 EcoInnovation District
buffers_poly_proj_final_trim
Particulate Matter ROI (Medium)
 0.000000 - 0.113824
 0.113825 - 0.322660
 0.322661 - 0.797465





Map showing the Codman Square Neighborhood Development Corporation Service Area, the Talbot-Norfolk Triangle Eco-Innovation District, and tree planting locations on CSNDC and private properties. Image courtesy of Jessica Dietrich/The Nature Conservancy.



YOUR TREE-YOUR NEIGHBORHOOD

October 2019



Red Maple Facts: Due to its big size, thickness, and shape of the roots, the maple tree is very resistant to flooding and droughts. It is very useful as a shade tree in private lawns, parks, and many public places. Red maple can reach 40 – 90 feet tall.

Year	Individual Tree Benefits					Energy Savings		Totals \$
	Stormwater Reten- Gallons	\$	Air quali-	CO2- \$	CO2- lbs.	Winter \$	Summer	
Year 2	506	4	4	4	45	-6	0	\$0
Year 5	1,935	16	4	7	279	-10	0	\$17
Year 10	6,302	50	44	24	1,047	-19	0	\$69
Year 20	22,309	178	56	101	4,340	78	0	\$413
Subtotal	30,952				5681			

Property Owner: Paul Malkama

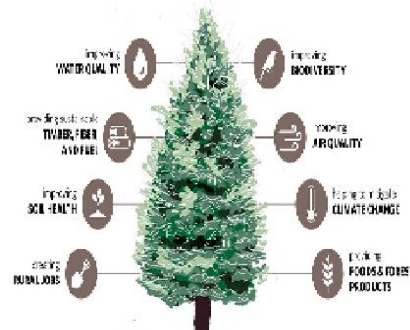
Address : 35 Elmhurst

TNT- EID Benefits-All Existing Trees

Abbr	Benefit Description	Value-USD	Amount
CO	Carbon Monoxide removed annually	23.06	34.74 lb
NO2	Nitrogen Dioxide removed annually	60.36	394.25 lb
O3	Ozone removed annually	3,423.25	4.24 T
PM2.5	Particulate Matter less than 2.5 microns removed	7,361.40	124.18 lb
SO2	Sulfur Dioxide removed annually	9.56	177.92 lb
PM10	Particulate Matter greater than 2.5 microns & less than 10 microns re-	1,346.27	431.06 lb
CO2seq	Carbon Dioxide sequestered annually in trees	11,493.20	247.98 T
CO2stor	Carbon Dioxide stored in trees(Note the benefit is not an annual rate)	288,637.29	6,227.74 T
Subtotal			
Total		342,054.09	

Benefits of Tree-Based Restoration

There are many benefits to planting trees. Some of the benefits include:



Air Quality, Health, Equity

- ❖ Fixed Purple Air Monitors
- ❖ Mobile monitors
- ❖ High sensitivity monitors at CSNDC office and at Talbot-Bernard Senior Homes
- ❖ Air Conditioner Giveaway and bill pay vs Urban Heat

Kresge Climate Change Health & Equity Initiative

- ❑ Focus on 3 key areas:
 - Passage of the Climate Roadmap Bill and related sections
 - Passage of Hero legislation
 - Passage of the City Conservation Corps initiative

- ❑ Surface resident concerns re: climate and what it means to them; meet them where they are

- ❑ Support them in pursuing their climate related interests

- ❑ Help them find funding to realize those interests

The Future Is Now....

- ▶ According to the UN: “The urban population of the world has grown rapidly from 751 million in 1950 to 4.2 billion in 2018”
- ▶ “68 % of the world population is projected to live in urban areas by 2050”, having grown from today’s 55%.
- ▶ EPA just detailed all the ways climate change will hit U.S. racial minorities the hardest...If the planet warms 2 degrees Celsius, Black people are 40 percent more likely to live in places where extreme temperatures will cause more deaths.-WaPo
- ▶ African Americans are 34 percent more likely to live in areas where childhood asthma diagnoses are likely to be exacerbated by climate change.

Green New Deal

□ Climate Justice Policies

- Accelerating decarbonization
- Justice Audits
- Financing Clean Energy

□ **Green Workforce Development**

- Reinvest in a Climate-just Future
- **Create an Urban Climate Corps**
- De-commodify Housing: Create Cooperative Housing and Community Land Trusts
- Renters Right To Counsel

□ **Just and Resilient Development**

- **Resilient Stormwater Infrastructure: Equitable Fees and District Planning...**

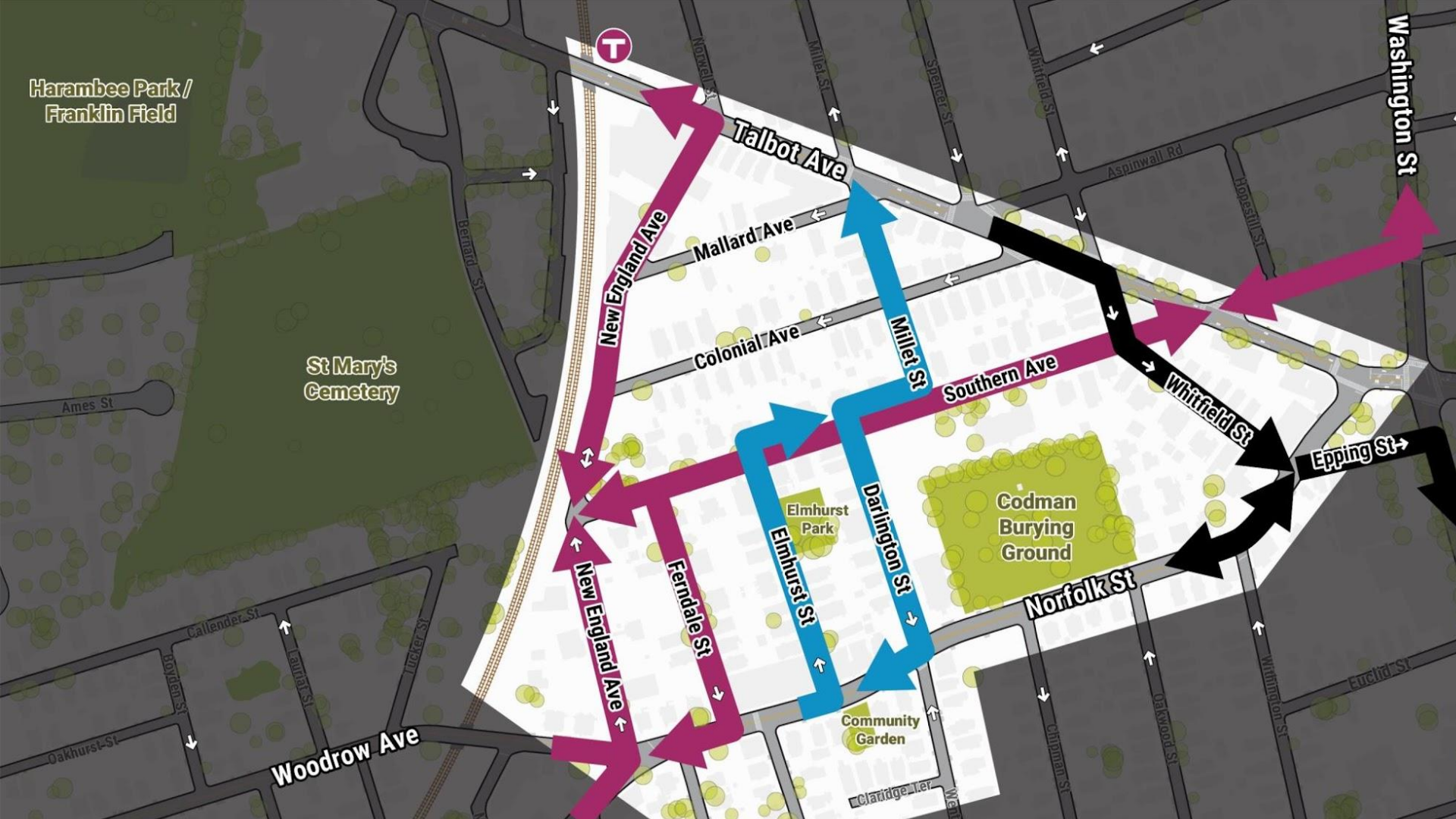
Harambee Park /
Franklin Field

St Mary's
Cemetery

Elmhurst
Park

Codman
Burying
Ground

Community
Garden



Curb Extensions / Daylighting/Green Infrastructure



Gateway treatment, NYC.....



PROJECT CONTEXT



Resilient Green Infrastructure and Workforce Development

*Defining Pathways Toward a Boston-Area Program
for Underserved Communities*

OCTOBER 2020

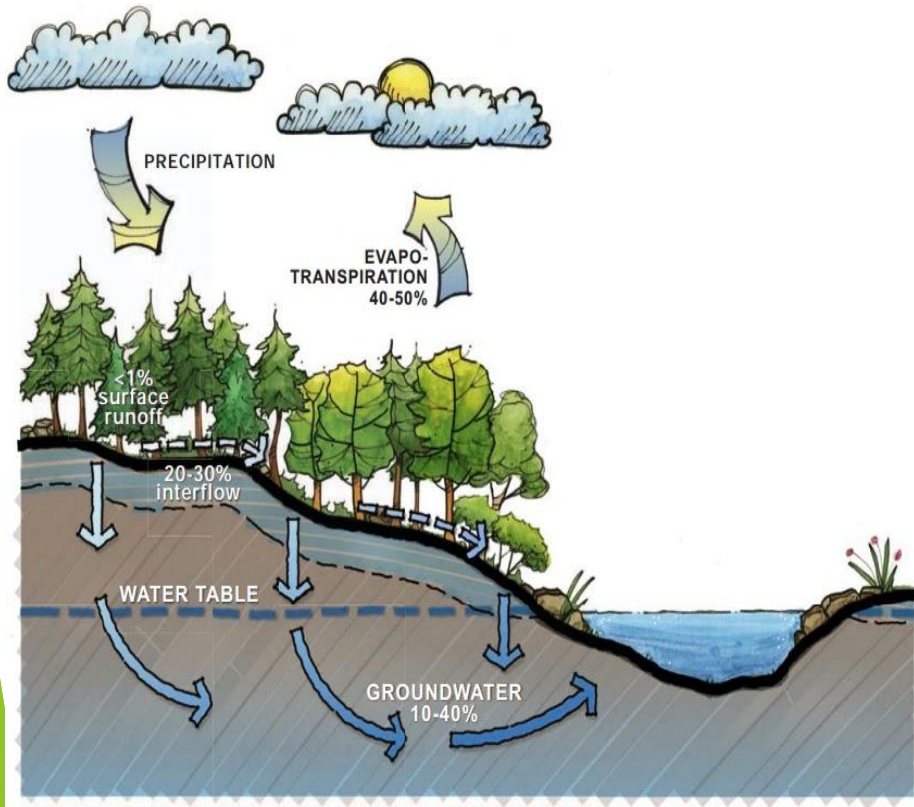


The Nature
Conservancy 



STORMWATER MANAGEMENT

- ▶ What is stormwater?
- ▶ Water originating from rainfall or melting snow that runs off across the land instead of infiltrating into the ground
- ▶ Picks up pollutants (sediment, nutrients, metals) as it runs across paved and unpaved areas



▶ WATERSHED BASICS Natural Water Cycle

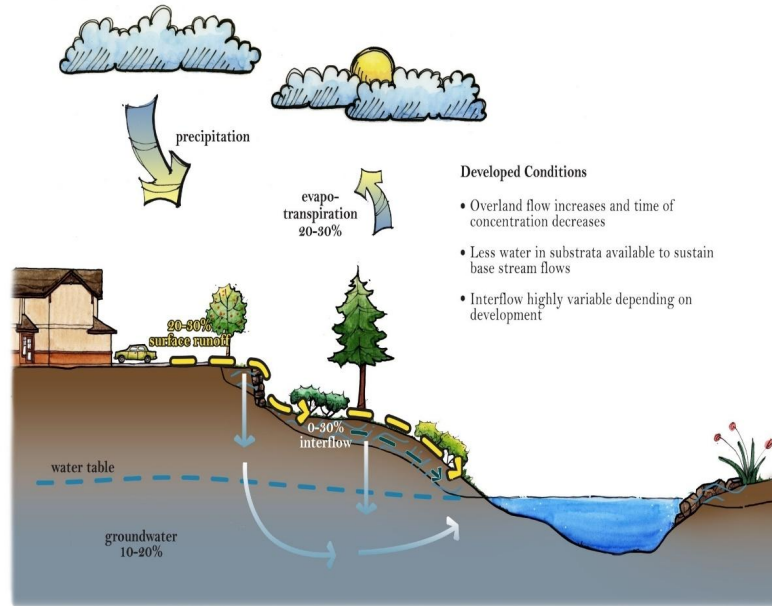
- ▶ Example: pre-developed water/hydrologic cycle in Pacific Northwest:
- ▶ During the winter, much of the rainfall is intercepted by the forest canopy and evaporated.
- ▶ The overland flow component is <1% and could take hours, days, or weeks to reach a surface water.
- ▶ During the summer and fall, streams are maintained by snowmelt, glacial melt water and/or groundwater.

2012 LID Technical Guidance Manual for Puget Sound

Urban Water Cycle

- ▶ Managed turf and landscaped areas are often very compacted with little to no infiltration

- ▶ **2012 LID Technical Guidance Manual for Puget Sound**



▶ STORMWATER MANAGEMENT Urban Water Cycle

- ▶ Developed condition (urban) water/hydrologic cycle:
- ▶ Includes lots of pavement (roads, parking areas, sidewalks), hard surface (rooftops), and landscaped areas (often using fertilizers and pesticides)
- ▶ Reduces or eliminates native vegetation, healthy soils, and natural drainage patterns
- ▶ Surface runoff component increases (e.g. from ~1% to 30% of total precipitation in the Puget Sound region)
- ▶ Less groundwater available to maintain stream flows

Stream quality and watershed health diminishes when impervious cover exceeds 10%, becomes severely degraded beyond 25% (Center for Watershed Protection, 2003)



▶ APPROACHES FOR SW
MANAGEMENT
Green Infrastructure

- ▶ Stormwater management practices that protect, restore, and mimic the native hydrologic condition by providing the following functions:
- ▶ Infiltration
- ▶ Filtration
- ▶ Storage
- ▶ Evaporation
- ▶ Transpiration





**standard
asphalt**

**porous
asphalt**





▶ APPROACHES FOR SW MANAGEMENT Green Infrastructure

- ▶ GI objectives and benefits are accomplished by:
- ▶ Protecting and restoring native soils and vegetation.
- ▶ Reducing the size/coverage of development (impervious surfaces).
- ▶ Designing stormwater systems to manage surface water from small contributing areas.
- ▶ Managing stormwater near where it falls.

SOUTHERN AVENUE TO MALLARD AVENUE

PROPOSED PLAN





New England Ave Green Infrastructure, Dorchester, MA

Photo Courtesy Bradley Ford Photography



New England Ave Green Infrastructure, Dorchester, MA

Photo Courtesy Bradley Ford Photography



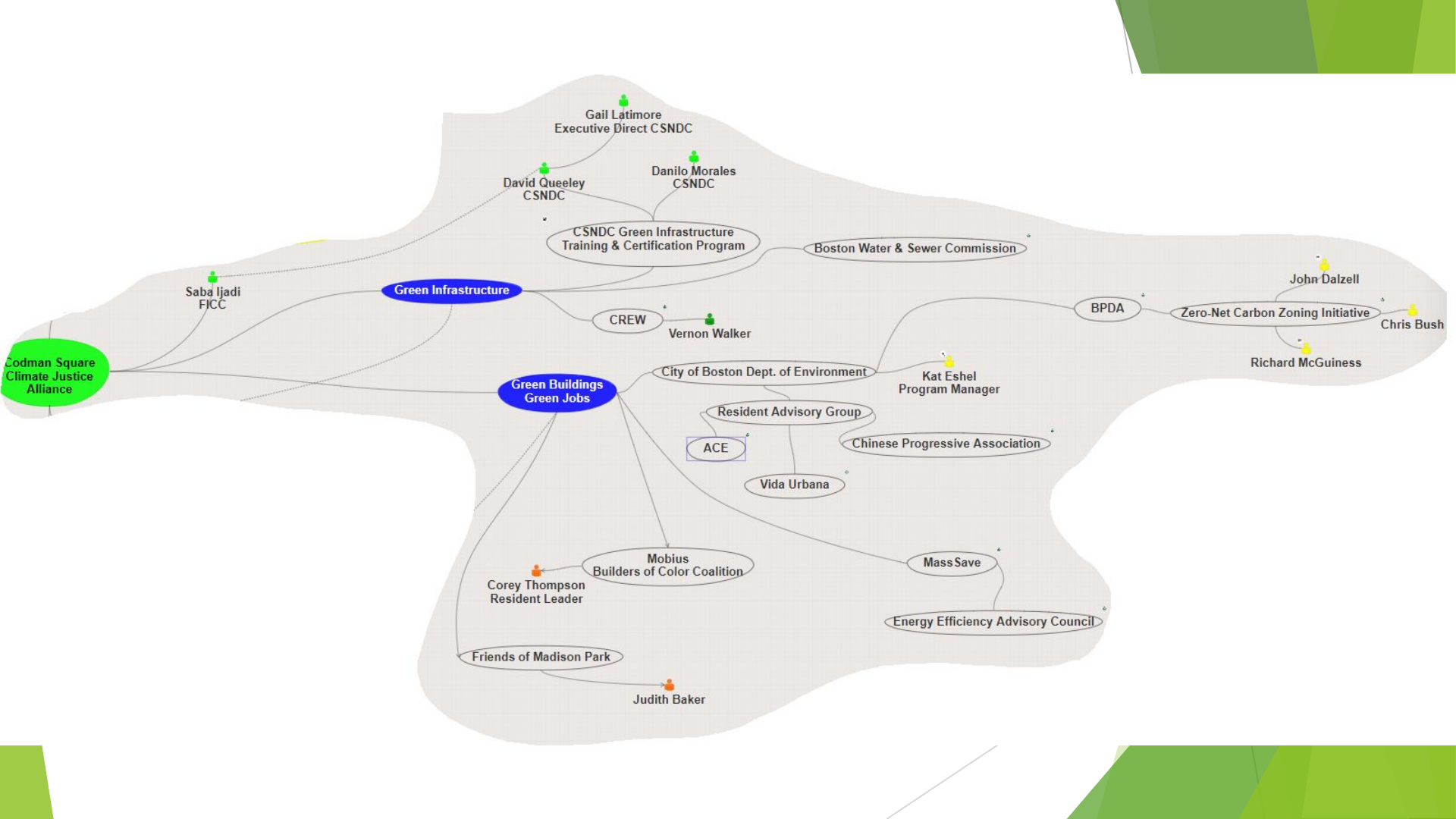
Green Infrastructure, New England Ave; Dorchester, MA

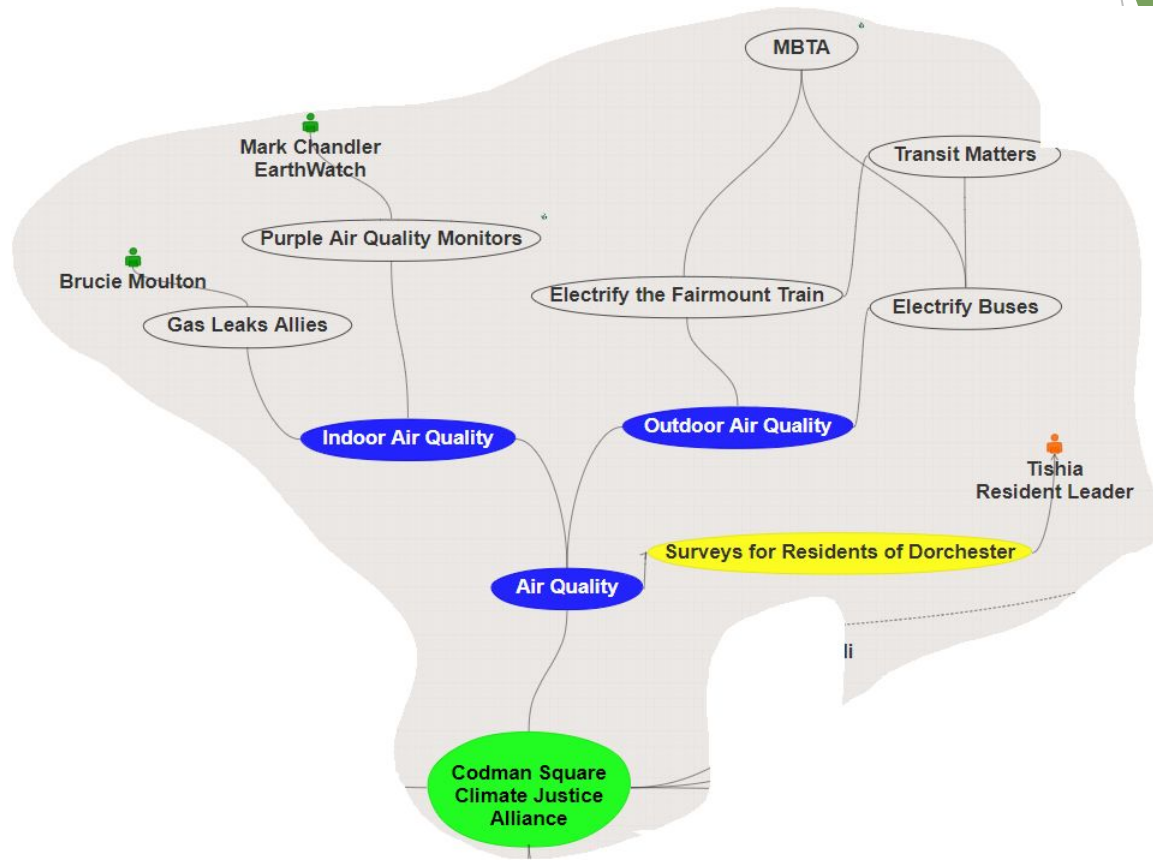
Photo Courtesy Bradley Ford Photography

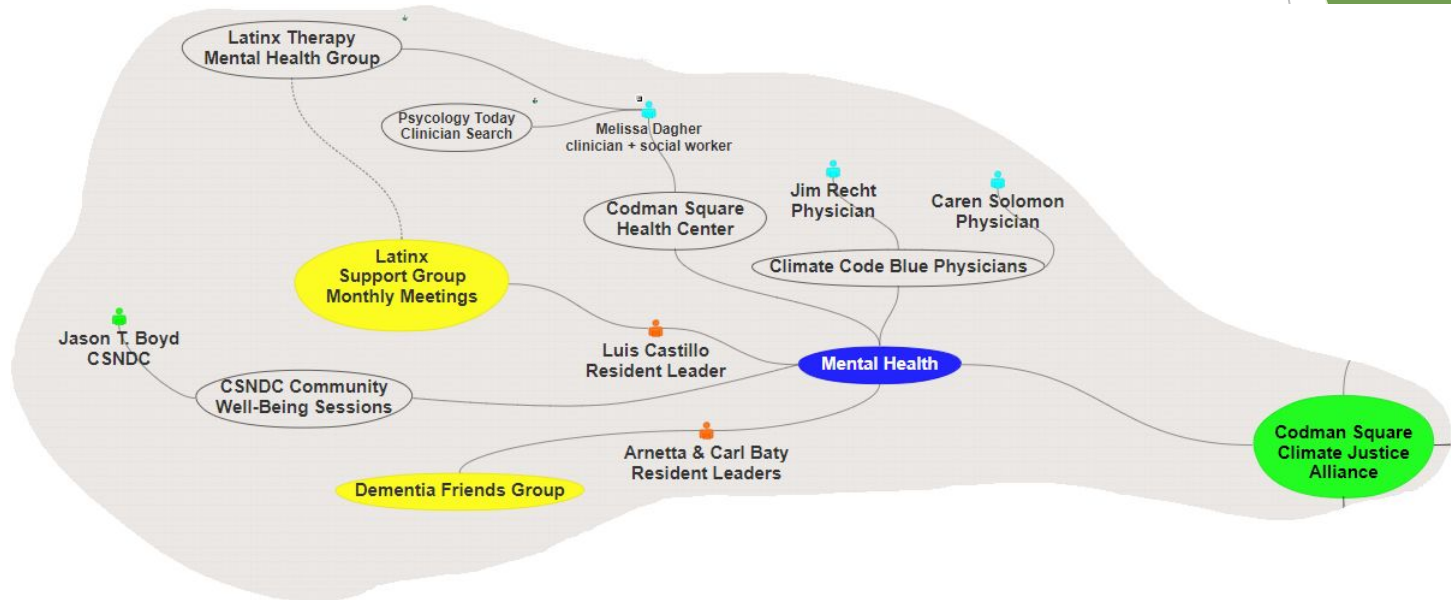


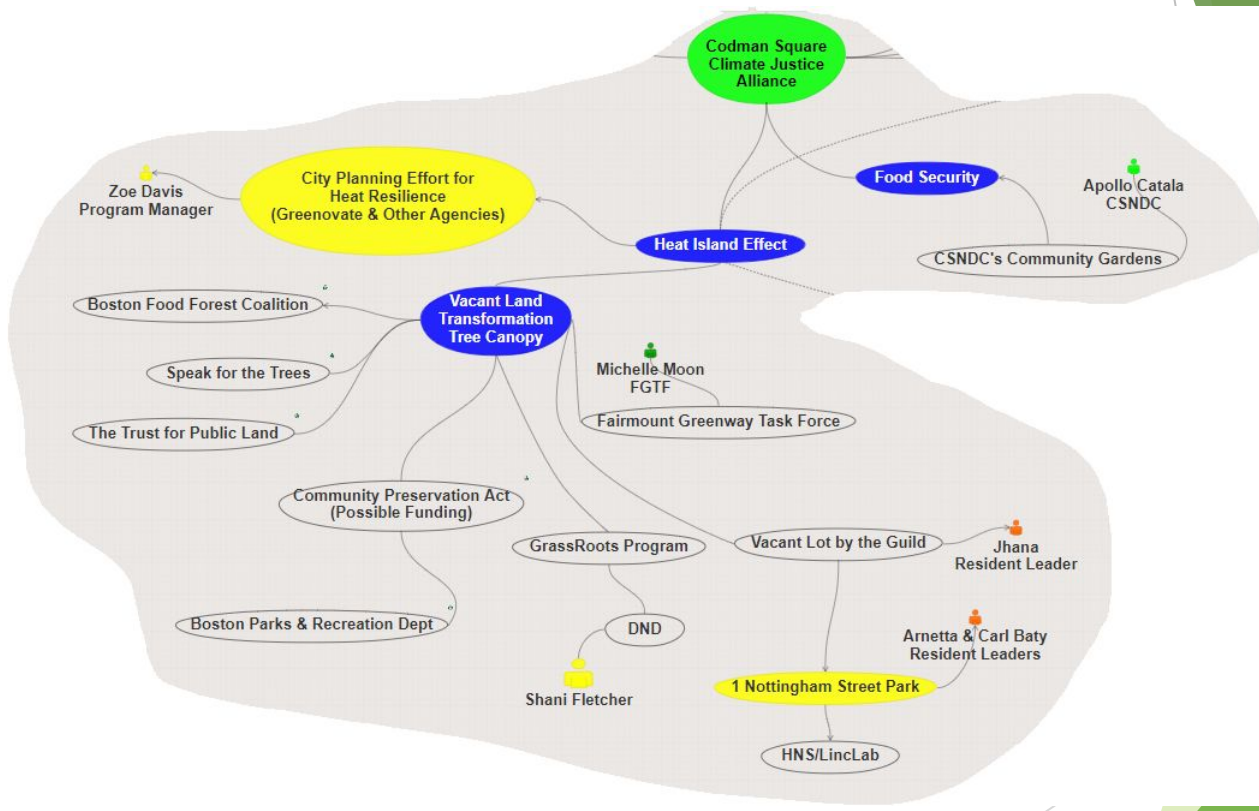
New England Ave Green Infrastructure; Dorchester, MA

Photo Courtesy Bradley Ford Photography









Partnerships....

A key component of an ongoing process....

Talbot Norfolk Neighbors United The Boston Project Ministries Codman Square Farmer's Market

Barr Foundation LISC-Boston NRDC Mayor's Office Enterprise Community Partners

Codman Square Health Center TNC Codman Square Neighborhood Council

CSNDC Programs Community Cafe Millenium 10 Mayor's Office Greenovate
BRA

Center DND Renew Boston NSTAR NGRID MA Clean Energy

Codman Academy 2nd Church Eco Districts USGBC Lime Energy

BU Sustainable Neighborhoods Lab Tufts University EPA

Coop Power The Nature Conservancy Earthwatch The Trust for Public Land

What's next for Cummins Highway?



The Cummins Highway reconstruction goal: safer, more accessible

Transform Cummins Highway into a ***tree-lined neighborhood street*** that is *safer* for families to walk, wait for the bus, ride bikes, or travel by vehicle.

It will *connect residents* to the City's network of *open spaces* and make it easier for elders to cross the street.

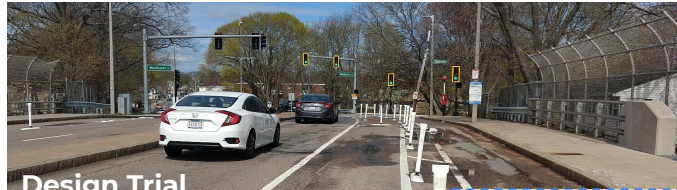


Timeline of Cummins Highway reconstruction project

Apr. 11, 2019 1st public meeting at Mattahunt

Feb. 27, 2020 3rd public meeting at Mattahunt

▶ *Presented design concepts*



**Design Trial
(Phase 2)**
October 2020 - October 2021

Jul., 2021 - Ongoing
Design for Cummins Reconstruction



**Design Trial
(Phase 1)**
Jul. - Oct.
2020

Oct. 29, 2019 2nd public meeting at Mattahunt

Jun., 2021 - Ongoing

Engagement for the design of Cummins Reconstruction

- ▶ *June: Special T-Talk - Arrested Mobility with Mattapan Food & Fitness*
- ▶ *July: Heat Resilience*
- ▶ *July: Air Quality*
- ▶ *August: Land Use*
- ▶ *September: Lighting*
- ▶ *October: Public Health*
- ▶ *November and beyond: trees, green infrastructure, roundabouts, pedestrian improvements*

Focused conversations and input

We will continue to have conversations with you about the redesign of Cummins Highway. **Your input during these discussions will be used to inform the design of Cummins and will be shared with other departments to inform their work as well.**

In June we hosted a special edition of T-Talk with Charles T. Brown to discuss ways mobility of Black Americans is limited in the U.S. through police, policies, and polity.

 twitter.com/ctbrown1911

 equitablecities.com

Focused conversations and input

In July we hosted two virtual meetings with the Environment Department:

We talked about the City's heat resilience study and the redesign on Cummins. During this conversation we heard:

- You would like us to add more shade. We are looking into trees and shelters. Look for a community conversation in the coming months!
- You were concerned about the temporary redesign and its impact on emergency services and traffic.

We talked about air quality and how transportation policies and design influence air quality. During this conversation we heard:

- You were interested in us monitoring air quality on the corridor. We are looking at locations where air quality monitors can be located in the project area.
- You were concerned about the temporary redesign on Cummins Highway and how traffic is affecting air quality.

Focused conversations and input

In August we hosted a virtual meeting with the Boston Planning and Development Agency:

We talked about PLAN Mattapan, how their work related to transportation, and how our departments collaborate. During this conversation we heard:

- That Cummins is part of a network, therefore we need to take a look at the traffic on side streets too. We conducted traffic counts.
- You want us to be proactive and make sure we are working with MBTA, trash removal trucks, and school buses on traffic management before the a new design is implemented.

Focused conversations and input

In September we hosted a virtual meeting with the City's Street Lighting Division:

We talked about the goals of the city for street lighting and the opportunities for the Cummins Reconstruction. During this conversation we heard:

- You were concerned about the brightness and color of the light, we will work with you to find the appropriate brightness and color that can help improve visibility.
- You wanted to know where you can see lighting similar to the one Public Works is proposing.
 - River Street from Cummins Highway to Hyde Park (Way St)
 - Nubian Square
- Share your thoughts: bit.ly/Cummins-Light_Feedback

Focused conversations and input

In early October we hosted a virtual meeting with the Boston Public Health Commission:

We talked about the connection between street design, health, and wellbeing. During this conversation we heard:

- You were concerned about the traffic during the trial and the effect on side streets. We conducted traffic counts in September on side streets. We are scheduling new traffic counts on side streets now that the trial has ended.
- You wanted to know more about how we are engaging residents of the community in the process for the redesign. We went over some of the other ways people are receiving information and engaging with our project.

Next Steps

Stay tuned for when we announce the next workshops on design elements:

- **Trees** and the Cummins Highway redesign
- **Bus stops** and the Cummins Highway redesign
- **Roundabouts** and the Cummins Highway redesign
- *and more...*

Chat with us in-person

Meet us at the Mattapan
Square Farmers Market!

888 Cummins Highway

Every Saturday in October
from 10 a.m. - 1 p.m.



Resources and staying engaged



Plan to vote in primary election, Tuesday, November 2nd!

Are you voting early in person?

- Another Course to College Cafeteria
 - October 23-24 from 11 a.m. - 7 p.m.
- Mildred Avenue K-8 School Gymnasium
 - Tuesday, October 26 from 12-8 p.m.

Are you voting by mail?

- Mail the ballot to the address on the envelope, **no cost**.
- Return in person to a dropbox.
 - Mattapan Branch Library (1350 Blue Hill Avenue)
- On election day go to your polling location and swap your mail-in ballot for a ballot to cast in-person.

boston.gov/early-voting



You can now ride route 28 FOR FREE

Route 28 bus rides are now able to board buses at all doors without paying a fare *until November 29, 2021*.

More information at [boston.gov/28bus](https://www.boston.gov/28bus).



PLAN: Mattapan Public Art Project

BPDA is looking for property owners who are interested in having a mural on their wall. They have funding for two more walls.

Any interested property owners should email kenya.p.beaman@boston.gov



Ride Bluebikes at a discount!

Discounted passes are available for our public bike share.

People who participate in public assistance programs or otherwise have a qualifying income can receive a discount.

Discounted passes are only **\$50 a year or \$5 a month** with no annual commitment. Include unlimited one-hour trips.

boston.gov/discounted-bluebikes



Neighborhood Walk: Blue Hill Ave

Join a community walk, history tour, do research and a scavenger hunt!

Saturday, October 23 from 2-4 p.m.

- Meet at the Comfort station at Blue Hill Ave and River St.

Pens, notebooks and disposable cameras will be supplied so to join you must RSVP:

tinyurl.com/MattapanBHAWalk



GMNC
Powerful Pathways

SATURDAY, Oct 23rd
2:00-4:00pm ET

Meet at Comfort Station, at the corner of River St and Blue Hill Ave. Language available in Kreyol & Español.

NEIGHBORHOOD WALK
BLUE HILL AVE

FREE Virtual Inyegar Yoga Classes

Contact Kay at
savage.mffc@gmail.com to
register.



Mattapan Food and Fitness Coalition (MFFC)
Iyengar Yoga Association of New England (IYANE)

Free Virtual (via Zoom) Iyengar Yoga Classes

Restorative 7:30 - 8:30 pm
Wednesdays, October 27 - December 29

Please have 3-4 towels or blankets, a pillow, a hand towel, and a strap of any kind (a bathrobe belt works!)

Active Asana 6:30 - 7:30 pm
Thursdays, October 28 - December 16

We recommend a yoga mat, 2 blocks, a belt and a blanket

In this era of Covid 19, take charge of your health and boost your immune system.

IYANE and MFFC are teaming up to offer free classes, to introduce you to yoga with certified Iyengar Yoga Teachers.

Feel more at ease in your body and learn to breathe for your health.

For more info and to register: savage.mffc@gmail.com

BKS Iyengar invented yoga props, allowing access to the transforming postures of yoga no matter your level of fitness. His clear and concise teaching has transformed the lives of students around the world.



Rental Relief Fund

City of Boston is dedicating federal funds to help Boston residents who have been economically impacted by the COVID-19 pandemic and are having difficulty paying their rent.

For more information about eligibility, resources, and to apply:

[**boston.gov/rental-relief**](https://www.boston.gov/rental-relief)

Stay in touch:

Codman Square Neighborhood Development Corporation

- Learn more about CSNDC: csndc.com
- Reach out to David Queeley: david@csndc.com

Cummins Highway Reconstruction

- Visit the project website: boston.gov/cummins-highway
- Chat with us: bit.ly/Cummins-15
- Reach out to Jeff Alexis: jeffrey.alexis@boston.gov
- Meet with us at the Mattapan Farmers Market on Saturdays

NO USE